



DSM-4020

Media Pro® 4000

Digital Sound Module

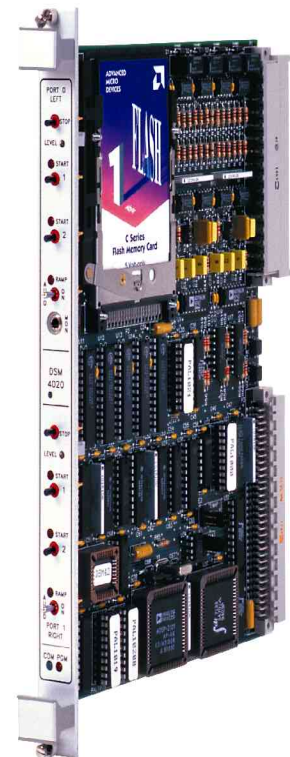
The DSM-4020 is our Enhanced Solid State Audio Playback Module Giving the Media Pro® 4000 System CD Quality Audio for extended periods of time in Venues of all Sizes.

Designed for continuous and reliable operation with little or no maintenance, monitoring or service required. Multiple cards can be used to provide all the high quality sound you need.

**Digital Sound: Where you need it
When you need it!!**

Standard DSM-4020 Features

- ◆ PCMCIA Flash or ATA Cards for Extended Playback
- ◆ Stereo or Two Mono Stereable Sound Channels
- ◆ (2) Async Ports with 64 Segments Each
- ◆ 16 Bit CD Quality for Over 1 Hour
- ◆ ADPCM at 22.050 for Over 11 Hours
- ◆ Built in Maintenance Mode – 100hz, 1khz, 10kz, Pink
- ◆ (7) Input Mix Bus per Port
- ◆ Individual Level Control for Each Port
- ◆ Cue or Real Time Triggering
- ◆ Multitrack/Cascadable Within Each Rack
- ◆ Supports WAV 16 Bit PCM File Formats at Sample Rates of 8k, 11.025k, 16k, 22.05k, 24k, 32k and 44.1k
- ◆ Supports 16 Bit PCM, ADPCM, Ulaw
- ◆ Uses Industry Standard Audio Editors like Pro Tools, Cool Edit, Wave for Windows

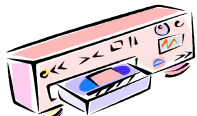


Requires installation in one of our Media Pro® 4000 Racks.

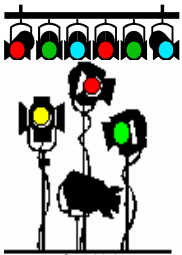
- IMC-4020 for Single Card Application
- HMR-4000 4 Slot Rack Mount
- VMR-4000 17 Slot Rack Mount.



Total Show Control



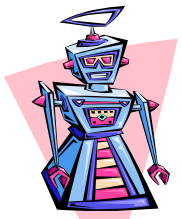
Video Playback



DMX Lighting Control



Video & SMPTE Time Code Gen/Rcvr



Animatronics Control



Digital Audio Playback & Control

DSM - 4020 Memory to Time Estimates in Mono Mode

Anitech Systems, Inc

(Minutes)	PCMCIA MB>	1	2	4	8	12	60	110	220	520
	Actual Byte >	1,048,576	2,097,152	4,194,304	8,388,608	12,582,912	62,914,560	115,343,360	230,686,720	545,259,520
PCM Sample Rate (K)	Frequency Response (K)	(Minutes)	(Minutes)	(Minutes)	(Minutes)	(Minutes)	(Minutes)	(Minutes)	(Minutes)	(Minutes)
44.100	22	0.19	0.39	0.79	1.58	2.37	11.88	21.79	43.59	103.03
32.000	16	0.27	0.54	1.09	2.18	3.27	16.38	30.03	60.07	141.99
24.000	12	0.36	0.72	1.45	2.91	4.36	21.84	40.04	80.09	189.32
22.050	11	0.39	0.79	1.58	3.17	4.75	23.77	43.59	87.18	206.06
16.000	8	0.54	1.09	2.18	4.36	6.55	32.76	60.07	120.14	283.98
11.025	5	0.79	1.58	3.17	6.34	9.51	47.55	87.18	174.36	412.13
8.000	4	1.09	2.18	4.36	8.73	13.10	65.53	120.14	240.29	567.97
		(Minutes)	(Minutes)	(Minutes)	(Minutes)	(Minutes)	(Minutes)	(Minutes)	(Minutes)	(Minutes)
uLaw Sample Rate (K)	Frequency Response (K)	(Minutes)	(Minutes)	(Minutes)	(Minutes)	(Minutes)	(Minutes)	(Minutes)	(Minutes)	(Minutes)
44.100	22	0.39	0.79	1.58	3.17	4.75	23.77	43.59	87.18	206.06
32.000	16	0.54	1.09	2.18	4.36	6.55	32.76	60.07	120.14	283.98
24.000	12	0.72	1.45	2.91	5.82	8.73	43.69	80.09	160.19	378.65
22.050	11	0.79	1.58	3.17	6.34	9.51	47.55	87.18	174.36	412.13
16.000	8	1.09	2.18	4.36	8.73	13.10	65.53	120.14	240.29	567.97
11.025	5	1.58	3.17	6.34	12.68	19.02	95.10	174.36	348.73	824.27
8.000	4	2.18	4.36	8.73	17.47	26.21	131.07	240.29	480.59	1135.95
		(Minutes)	(Minutes)	(Minutes)	(Minutes)	(Minutes)	(Minutes)	(Minutes)	(Minutes)	(Minutes)
ADPCM Sample Rate (K)	Frequency Response (K)	(Minutes)	(Minutes)	(Minutes)	(Minutes)	(Minutes)	(Minutes)	(Minutes)	(Minutes)	(Minutes)
44.100	22	0.79	1.58	3.17	6.34	9.51	47.55	87.18	174.36	412.13
32.000	16	1.09	2.18	4.36	8.73	13.10	65.53	120.14	240.29	567.97
24.000	12	1.45	2.91	5.82	11.65	17.47	87.38	160.19	320.39	757.30
22.050	11	1.58	3.17	6.34	12.68	19.02	95.10	174.36	348.73	824.27
16.000	8	2.18	4.36	8.73	17.47	26.21	131.07	240.29	480.59	1135.95
11.025	5	3.17	6.34	12.68	25.36	38.04	190.21	348.73	697.46	1648.55
8.000	4	4.36	8.73	17.47	34.95	52.42	262.14	480.59	961.19	2271.91

Space on PCMCIA devices is estimated on standard Megabyte, actual size may differ depending on manufactures specifications.