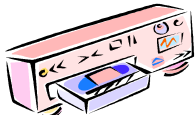




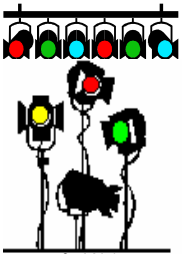
**SEM-4020**



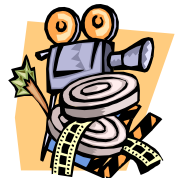
**Total  
Show Control**



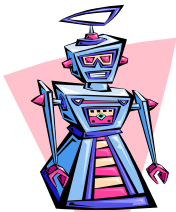
**Video  
Playback**



**DMX  
Lighting Control**



**Video & SMPTE  
Time Code  
Gen/Rcvr**



**Animatronics  
Control**



**Digital Audio  
Playback  
& Control**

# Media Pro<sup>®</sup> 4000

## **SEM-4020**

### **Serial Expansion Module**

The SEM-4020 provides serial control ports for serially controlled devices such as Laser Disk and CD players. Software drivers in the system directly support many of the serially controlled devices common in multimedia presentations. Protocol for each port is defined during system configuration and is downloaded using Media Pro<sup>®</sup> 4000 Software. Once configured, the port can be programmed in an application using the standard Media Pro<sup>®</sup> Control Language (MPCL) from Cues.

#### Standard SEM-4020 Features

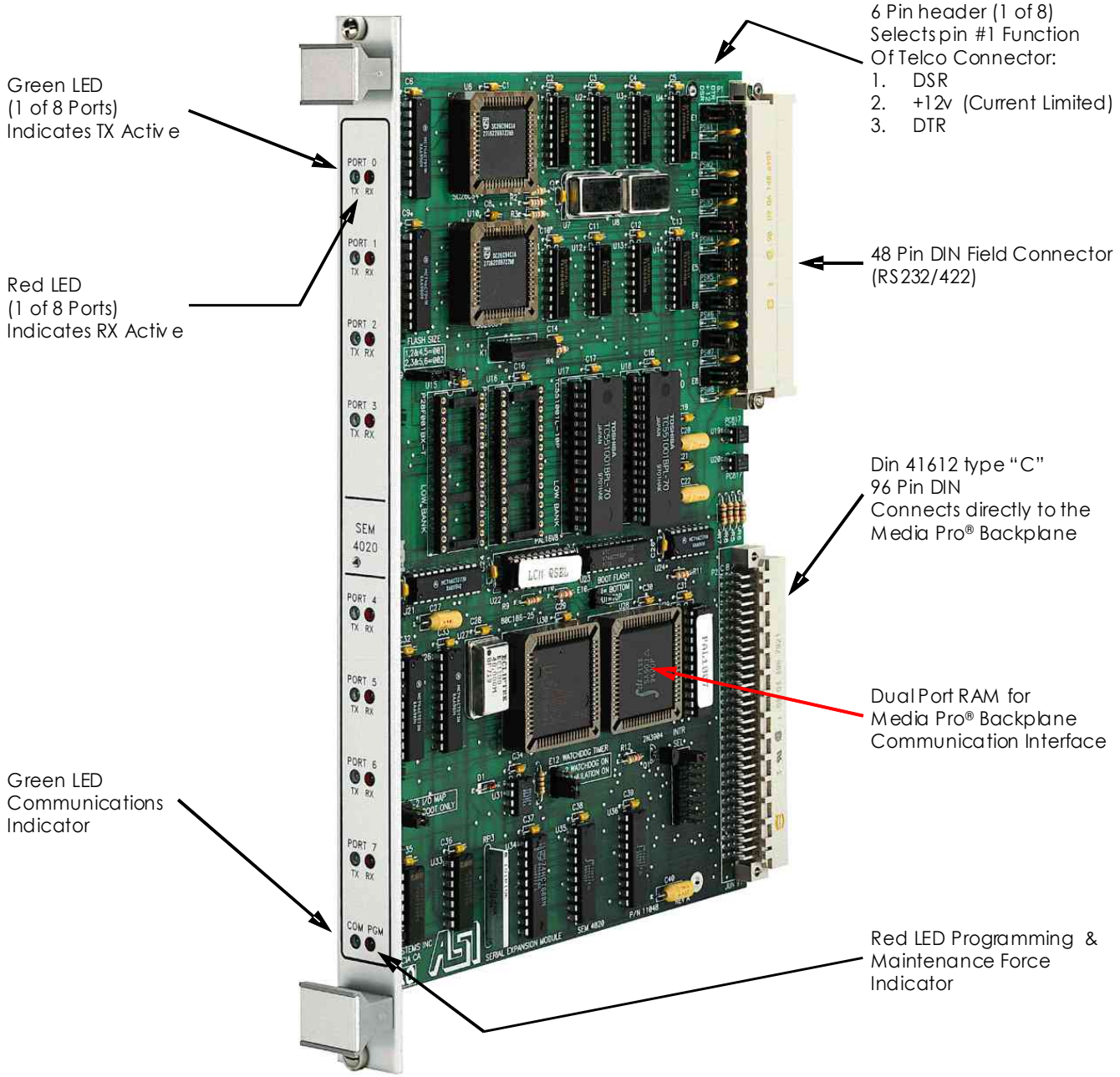
- ◆ (8) RS232/422 Switch Selectable Serial Ports
- ◆ Field Selectable Protocol Drivers for Each Port
- ◆ Powered Connectors for External Interface Adapters
- ◆ User Defined Hex Strings

In addition, the ports can be used to control the Media Pro<sup>®</sup> System from an external device or another Media Pro<sup>®</sup> system. Both ASCII and DF1 Binary control protocols are supported to initiate cue controls and commands to applicable modules.



**SEM-4020**

**Media Pro® 4000 SEM-4020  
Serial Expansion Module**



Complete documentation is available for downloading at our Web site or by contacting our offices.