



**VMR-4000**



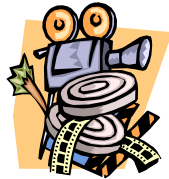
**Total Show Control**



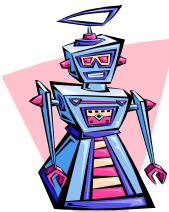
**Video Playback**



**DMX Lighting Control**



**Video & SMPTE Time Code Gen/Rcvr**



**Animatronics Control**

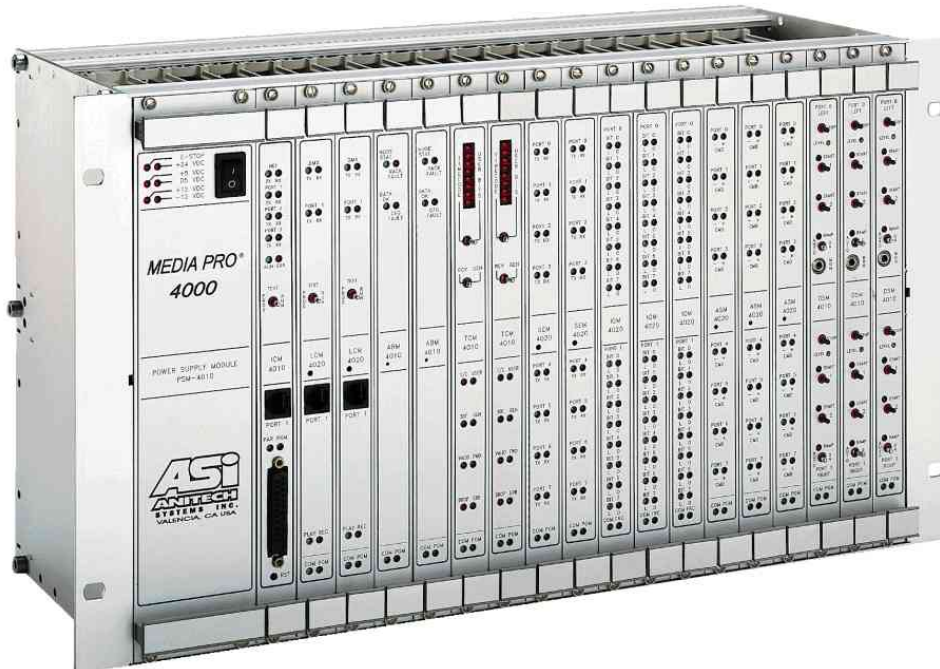


**Digital Audio Playback & Control**

# Media Pro® 4000

## VMR-4000 Vertical Module Rack

The Vertical Module Rack provides a 115/240 VAC Power Supply and motherboard for Media Pro® 4000 Modules in a 10.5" vertical 19" Retma Rack package. This unit has the capacity to hold one (1) Intelligent Controller Module (ICM-4030) and up to seventeen (17) Media Pro® 4000 Series interface/control modules. In addition, two (2) field power busses are provided on the backplane for constant and



### VMR-4000 with all Slots Filled



**VMR-4000**

**Media Pro® 4000 VMR-4000  
Vertical Module Rack**



**VMR-4000 with Power Supply,  
ICM-4030 and DSM-4020**

**PSM-4010 Specifications (used in VMR-4000)**

<b>Input, Voltage &amp; Frequency Auto Switching</b>	90 VAC to 135 VAC 175 VAC to 264 VAC 47 HZ to 63 HZ
<b>Input, Power</b>	2.5 A @ 90 VAC @ 80 Watt Load
<b>Input, Inrush Surge Current</b>	45 A peek
<b>Efficiency</b>	73% @ 115 VAC @ 80 Watt Load
<b>Heat Dissipation</b>	Approximately 21.6 Watts {80 watts * 27%}
<b>Operating Temperature</b>	0 to +50 Deg C @ 80 Watts

Complete documentation is available for downloading at our Web site or by contacting our offices.